

The former Provisional Capital Government Building in Busan stands as a living testament to Korea's modern history. Originally conceived as a hospital in 1923, the structure was completed in 1925 to serve as the Gyeongsangnam-do Provincial Office. Built of red brick with an imposing central entrance and rows of tall windows, the building exudes dignity and authority. During the Korean War (1950-1953), it took on a crucial role as the Provisional Central Government Office, where pivotal national policies were forged. Today, it remains not only an architectural landmark but a powerful symbol of resilience and the nation's enduring spirit.

Timeline

April 1, 1925 - June 30, 1983	Gyeongsangnam-do Provincial Office
August 18 - October 26, 1950	First Provisional Central Government Office
January 3, 1951 - August 14, 1953	Second Provisional Central Government Office
November 1, 1984 - Sep 29, 2001	Busan District Court & Prosecution Service
March 2002	Building sold to Dong-A University
2004 - 2008	Renovation and restoration
May 19, 2009 - Present	Seokdang Museum of Dong-A University

Government Building of the Provisional Capital, Busan
National Registered Cultural Heritage | 1925



PLAN YOUR VISIT

OPENING DAYS TUESDAY-SUNDAY
VIEWING HOURS 9:30am-5:00pm (Final Entrance at 4:30pm)
CLOSING DAYS Mondays, Legal Holidays, and November 1 (University Anniversary)

ENTRY IS FREE

Advance reservations are recommended for group tours of 20 or more. Wheelchairs and strollers are available free of charge in the lobby.

STAY IN TOUCH

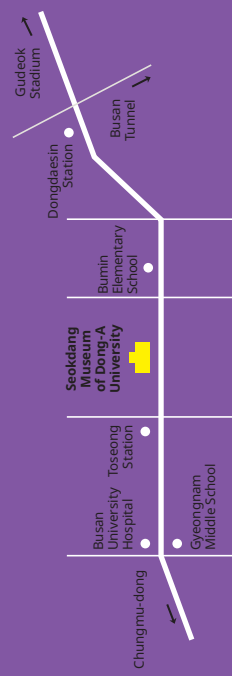
museum.donga.ac.kr [@dongamuseum](https://www.facebook.com/dongamuseum)
[@dongamuseum](https://www.instagram.com/dongamuseum)

ACCESS TIPS

- Food and beverages are not permitted.
- Please do not touch the exhibits.
- Pets are not permitted, except for certified service animals.
- Flash photography, tripods, selfie sticks, and commercial photography are not permitted.
- Please silence your cell phone before entering.
- Please keep your voice low and refrain from running.

DIRECTIONS

Subway About 350 meters away (a 5-minute walk from Toseong Station)
Bus 15, 16, 40, 70, 81, 123, 126, 161, 190



COLLECTIONS ONLINE



동아대학교박물관
SEOKDANG MUSEUM OF DONG-A UNIVERSITY
(49236) 225 Gudeok-ro, Seo-gu, Busan
TEL +82-51-200-8493 EMAIL museum@dda.ac.kr

Seokdang Museum of Dong-A University



1F

2F

3F



Dr. Jae-hwan Jeong (1906-1976)

The Seokdang Museum of Dong-A University opened on November 1, 1959, as the first museum in Busan. Named after Dr. Jae-hwan Jeong's sobriquet, the university's founder and the museum's first director, it embodies his vision of preserving Korea's cultural heritage. Its collection includes National Treasures and Treasures, the most among university museums nationwide and city museums in Busan. Since relocating to the Bumin Campus in 2009, the museum has evolved beyond a repository of artifacts into a cultural landmark where the history and spirit of Korea continue to resonate.



Cultural Space

1st Floor Seminar Room & Lobby
EMAIL : museum@dau.ac.kr

Learning Activities

We offer a full range of on-site activities for youths, adult groups, family, foreigners, and people with disabilities..

Archaeology Gallery

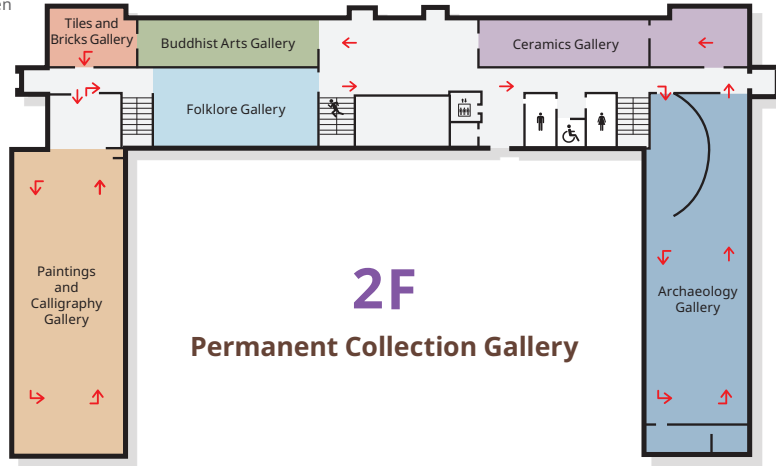
This gallery presents archaeological artifacts excavated since the 1970s, including earthenware vessels designated as Treasures of Korea, jar coffins, ornaments, and other ancient relics.



Earthenware Bowl with Raised Pattern
Treasure | Neolithic Age
Excavated from a shell midden at Yeongseon-dong, Busan

Earthenware Horn Cups with Horse Head Decoration

Treasure | 5th Century
Excavated from Bokcheon-dong Tomb No. 7, Busan



Ceramics Gallery

Ceramics are works of art shaped by earth, fire, and human hands. Here you can explore the beauty of Korean pottery, from early earthenware to celadon, buncheong ware, and white porcelain, each with its own distinct style and character.



Celadon Cup and Stand with Inlaid Chrysanthemum Design
1200s

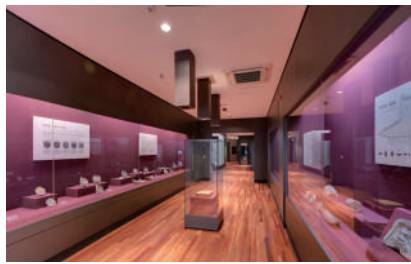
Buncheong Ware Placenta Jars with Stamped Design

Busan City-designated Cultural Heritage | 1400s



Tiles and Bricks Gallery

This gallery presents traditional Korean roof tiles and decorative bricks used for centuries. Roof tiles protected wooden buildings from decay while adding beauty, and bricks were used to construct tombs and other structures.



Green-Glazed Brick with Floral Design

660s-900s



Roof-top Guardian Figures

1400s-1800s



Buddhist Art Gallery

Korean Buddhist art reflects centuries of devotion, supported by both rulers and the faithful. Here you can see sculptures, paintings, and sacred manuscripts that combine spiritual depth with artistic beauty.



Transcription of Saddharmapundarika Sutra (The Lotus Sutra) in Silver on Indigo Paper, Volume 3
Treasure | 1422



Gilt-bronze Standing Buddha from Borisa Temple Site, Uiryeong
Treasure | 800s

Paintings and Calligraphy Gallery

Korean painting and calligraphy express the spirit of the past with simple elegance. This gallery features landscapes, bird-and-flower paintings, portraits, documentary works, and calligraphy, organized by theme.



Donggwoldo (The Eastern Palaces)
National Treasure | 1828-1830

This painting captures a grand view where the vast palace complex blends harmoniously with the surrounding landscape.



Certificate of Meritorious Subject Issued to Sim Ji-baek
National Treasure | 1397

Folklore Gallery

This gallery showcases objects from traditional Korean daily life. Exhibits are organized by use, including clothing, food, housing, weapons, tools for farming and trade, and items related to rituals and social customs.



Red-lacquered Furniture with Inlaid Mother-of-pearl Design used by Empress Sunjeonghyo (presumed)
National Folklore Cultural Heritage | 1930s



Busan Provisional Government Building Archives Gallery

On the third floor, the gallery features scale models showing the building's evolution through three periods: as the provincial office in the 1920s, the provisional central government in the 1950s, and its current use today. Architectural elements recovered during restoration are also on display.



Restoring Traces of the Past

The old walls preserved in this museum carry quiet memories of colonial hardship and the sorrows of the Korean War.

3F Busan Provisional Government Building Archives Gallery

